

Global \$25B+ Food and Beverage Manufacturer

Implemented Oracle PLM for Process originally in 2002 with good global adoption

1,000+ users, 150,000+ active and approved specifications

Low adoption of formulation functionality within PLM

Recipe development and formulation management performed mainly in customized spreadsheets

Business imperatives:

- Enable user friendly formulation prototyping with seamless PLM integration
- Remove product development silos
- Reduce the risk of errors
- Drive PLM adoption

Improves PLM usability and efficiency by *integrating recipe prototyping and formulation management within PLM for Process*

Approach



Implemented Kalypso's Formulation and Compliance Workbench



Developed connectors to the existing PLM system that enable sourcing of raw material information and synchronization of the final formula BOM



Extended Formulation and Compliance Workbench to add organization specific calculations

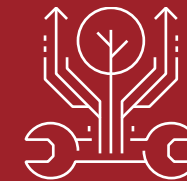


Piloted solution in one location, continuing with phased rollouts by geography

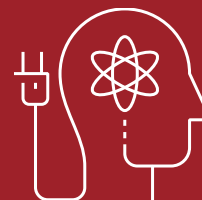
Results



Improved PLM system adoption due to a more user friendly formulation approach and interface



Reduced effort and risk of error to develop and maintain recipes as a result of integrated formula and discrete product development



Enabled a centralized formula repository allowing for increased reuse and efficiency improvements



Increased usage of the materials database leading to data quality improvements and standardization across the organization